

ENDON®

Rubens Ceiling Pendant Fitting INSTRUCTION MANUAL

Safety Warnings

- This product is only suitable for connection to a 240V~50Hz supply in accordance with current IEE wiring regulations, and should be installed in accordance with local building regulations. It is for indoor use only, and is **not** suitable for a bathroom location.
- Before installing your light fitting always switch off the mains supply, and remove the appropriate fuse or switch off the appropriate circuit breaker before commencing installation. Ensure that no one else has access that would enable the supply to be inadvertently reconnected.
- **This is a Class 1 product and must be Earthed.** The terminal blocks are supplied according to requirements of the fitting.
- Never fit bulbs of a higher wattage than those specified on the label (as these may cause overheating and damage the fitting)
- This product contains delicate parts – be careful during handling and maintenance to avoid breakage.
- If you are in any doubt about your competence please consult a qualified electrician.
- If any modification is made it will invalidate the warranty and may render the product unsafe.

Care Information

Allow 10 minutes to cool before replacing, adjusting or cleaning.

Clean with a dry cloth only. Do not use liquid or abrasive cleaners on this product.

Assembly/ User Instructions

Before you start

Please read these instructions carefully before fitting and retain for reference. Check the packaging and make sure that you have all the required parts. Follow each assembly step in order to prevent incorrect assembly. Ensure that the product is fully assembled as illustrated before use.

Please note - This instruction covers multiple fitting styles. While the assembly steps are the same, your product may vary from the diagram.

The Light pack contains:

Light fitting
Terminal connection block(s)
Fixing pack
Allen key

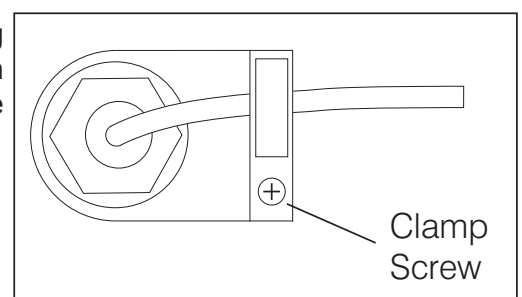
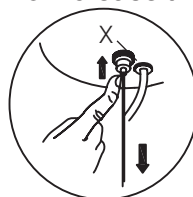
The following tools may be required:

Selection of cross and flat head screwdrivers.
Electric drill and assorted drill bits.
Wire strippers.
Electrical insulation tape

These assembly diagrams are intended as a guide – if in doubt consult a qualified electrician.

1. Decide on the position of the light fitting, or remove existing light fitting. Take a note of the position of the electrical connections. Ensure there is a solid mounting surface, preferably a wooden joist or joist bridge to support the weight of the light fitting.
2. Remove the fixing bracket (A) from the ceiling cover and attach to the ceiling using the screws provided. Ensure there is a joist at the point of fixing to support the weight of the product. Take care to avoid damaging any concealed wiring and pipes. See Fig. 1.
3. **Height Adjustment:** This will be easier to complete before attaching the product to the ceiling. To reduce the drop of this pendant, push the steel suspension cable up into the ceiling cover. To increase the drop press button X.

To reduce the length of the electrical flex, carefully loosen the screw in the cable clamp in the ceiling cover. Feed the cable through the clamp and into the ceiling cover. When the desired length of cable is reached, retighten the clamp.



Assembly/ User Instructions

Always ensure the weight of the product is supported by the steel suspension cable and not the electrical flex.

4. For 75940 and 77114: the bars are folded out of position in the retail carton. Loosen the grub screw and unfold the bars to desired positions. Secure in place by retightening the grub screw with the supplied allen key. See Fig. 2.
5. Support your fitting and connect the house wiring to the terminal block – see expanded wiring details below. The 4th terminal block connector is used for the “loop” wires of the “Ring Circuit”. There may be more than one set of cables in the “loop” connections. If there is a “Ring Circuit” and you do not understand the connections you must consult an electrician. Any loose terminal blocks – not secured to ceiling cup – should always be covered with 2 layers of good quality insulation tape.
6. This product has “L” shaped fixing holes to allow easy fixing to the ceiling strap. Locate the “L” slots around the small screws (B) on the ceiling strap (A). Rotate the ceiling cover to attach the product to the strap. Tighten the screws to secure. Take care not to trap any wiring.
7. Fit the bulbs (C - not supplied). **NOTE: Never fit bulbs of a higher wattage than those specified on the label (as these may cause overheating and damage the fitting).**
8. Turn on the power and test.

Fig. 1

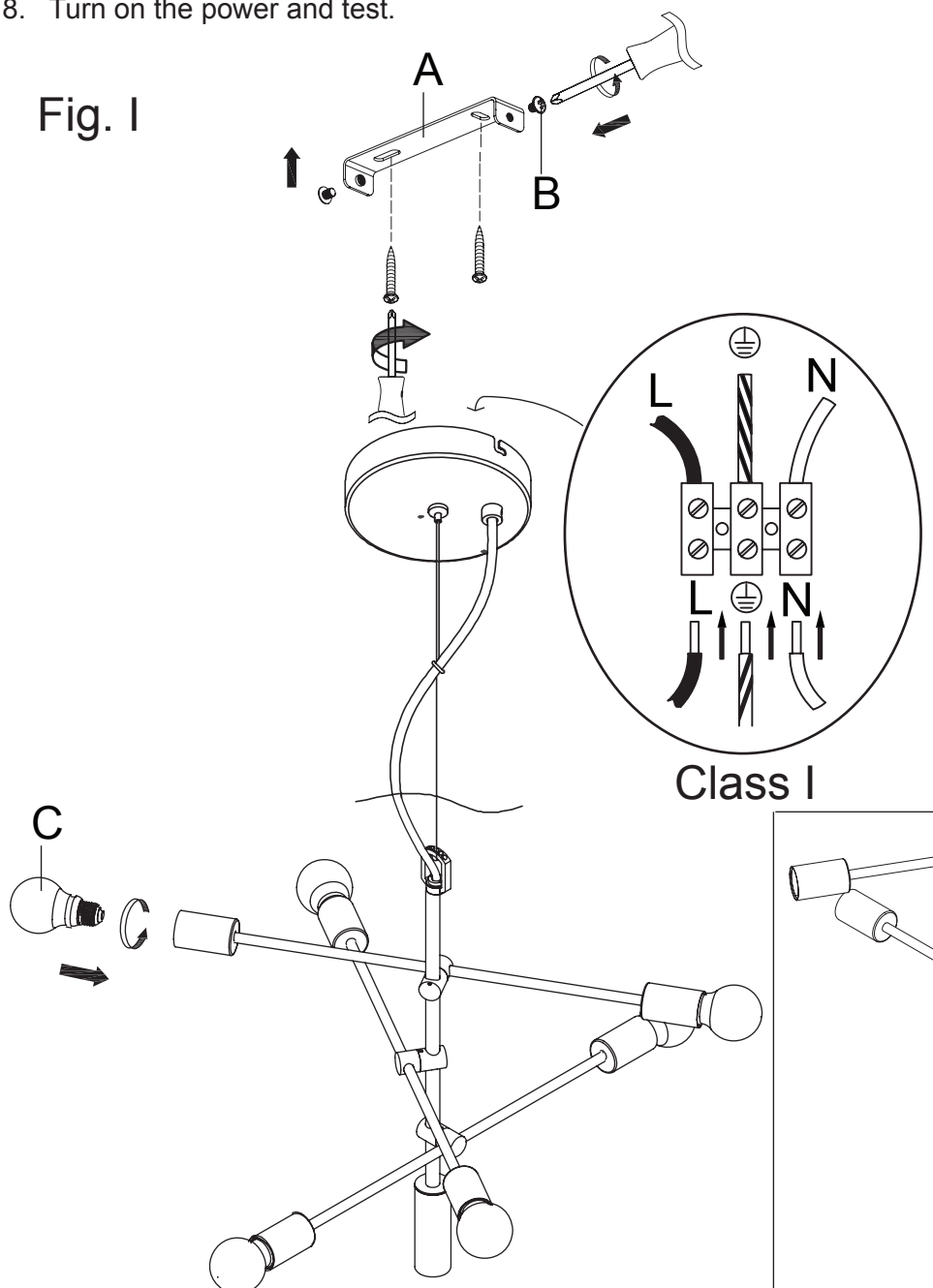


Fig. 2

